



## Asoni360 Entire View Security System

**Asoni Communications Co. Ltd.**



## Asoni360-Panoramic Security Solution





## What Is 360 Degree Panoramic Security?

Concept Overview:



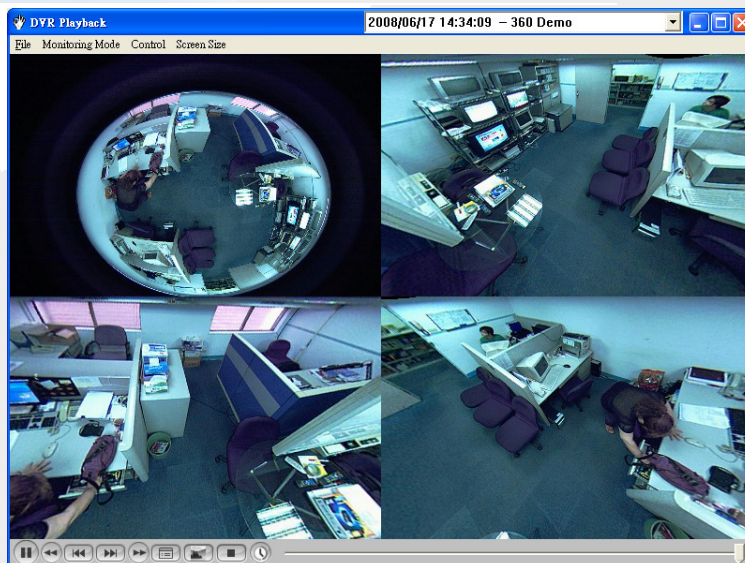
360 degree image taken from single panorama camera



De-warped images to view the whole scene



## Asoni360-360 Panorama Screen Shot



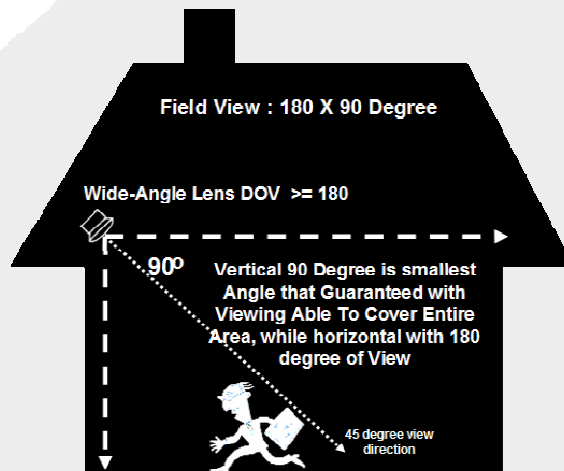


## Multiple Monitoring Modes of Asoni360-360° (with Auto pan function)



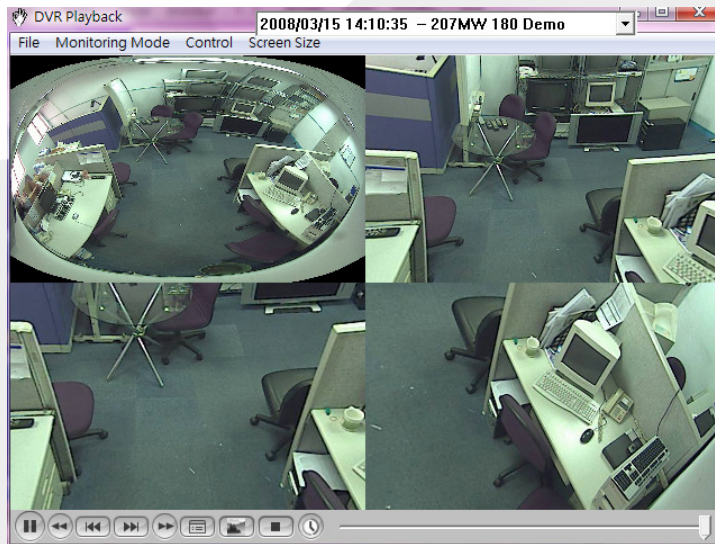
## What is Asoni360- 180°?

Asoni360- 180 Using  
180 X 90 degree view  
produce entire view  
without blind-spot.

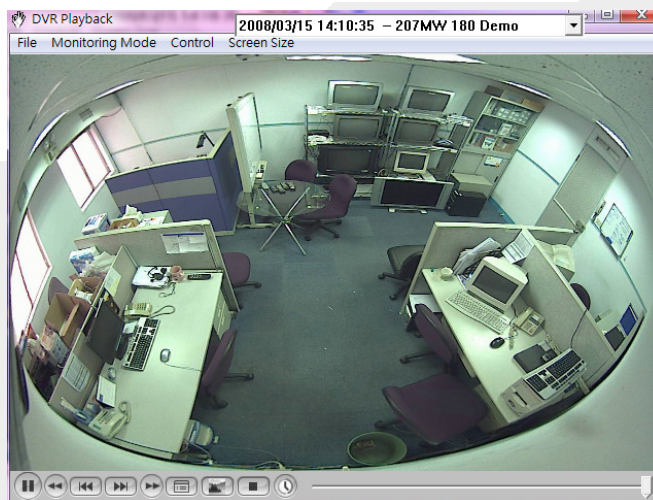




## 180 Panorama Screen Shot (Perspective Mode)



## 180 Panorama Screen Shot (Cylindrical Project Mode)



Fisheye Image Convert To Cylindrical Projection , It's Entire Viewing No Blind-Spots



## Asoni360 -180° Multiple Monitoring Modes



Each Viewing Mode is Entire View



### Key Benefits :

- Save total cost by reducing number of camera, installation, cabling, and maintenance needed.
- Provide 360 degree view of entire scene without any blind spot.
- Save more time & effort to adjust the best viewing angle in installation.
- Real-time tracking of suspected event by point and click. No mechanical delay.
- Expanding camera monitoring scope capability to the most.
- Great flexibility to meet each customer's monitor size.
- Unique & innovative solution will bring customers more special niche in competition.
- Preserve more information of the scene when event occurred.
- Reduce network traffic loading 2-3 times.



## Key Features :

- Concurrently support Up to 12 panoramic cameras in single PC.
- 360 degree entire scene from one camera and no need expensive mechanical PTZ, but also achieve the similar performance.
- Each channel will be controlled independently.
- Easily point and click to change viewing area and zoom size instantly.
- Remote monitoring based on TCP/IP.
- High-Speed optimized de-warp engine embedded.
- Support multiple panoramic imaging methods.



## Key Features (cont) :

- High image quality by optimized post-processing.
- DVR (Digital Video Recorder) module included.
- Support Remote storage for recording.
- Fully IE & Remote monitoring support.
- Dual Screen Supported. (1 PC Control 2 Monitors)
- Prompt White-Balance adjustment will bring optimized Color presentation.



## You can use Asoni360 at following environments

- Public Places – Building entrance, street, school, government building, Airport, stadium, concert
- Personal - home security, property, farm
- Event Places – sport event, car racing, celebrations
- High Security – Safe room, IDC, Warehouse
- Customer Area – Mall, store, hotel, theme park,
- Working Places – Factory, call center, construction site
- Tourist – Scenic point, hotel rooms
- Defense – coastal guard, security zone, border control

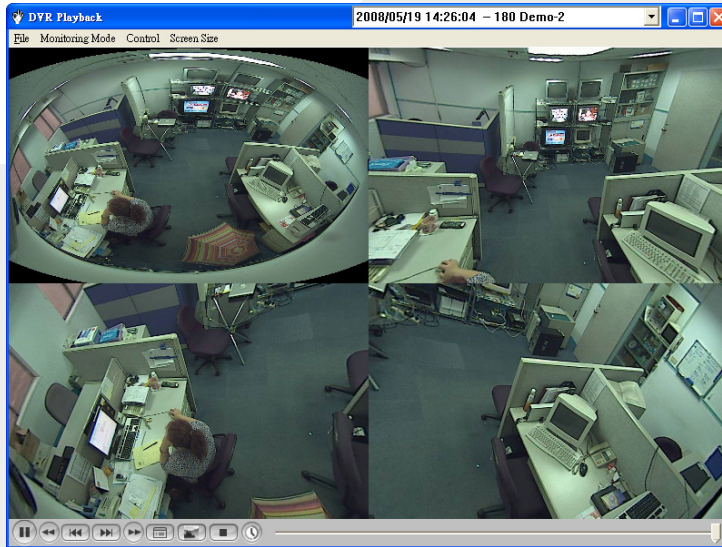


## Special Function “Pack And Publish”

- Pack and Publish :

This Function allows you to generate a small executable program, thus you can distribute this file freely to anyone. Those people who receive this file can also enter you monitoring system without installing Asoni360 again.

- Asoni360 Support 3 Types Pack/Publish remote files.
  - (1) Monitoring System.
  - (2) DVR Recording File and Playback.
  - (3) Snapshot, Snapshot also support full PTZ Functions.



Frame Rate	1.0 ~ 10.0 FPS (Each Channel, Dependent on Image Resolution and Compression Quality)
Image Resolution	640 X 480 (JPEG) to Mega Pixels
Field of view	30 ~ 135 (Each sub screens)
Data Transmission	10/100 Base TCP/IP
Image quality	24 Bits True Color
Max Channel support	12
Screen Separation	1 , 4, 6, 9, 12, ... , up to max 32 Channels
DVR	JPEG/MJPEG , 3.5 ~ 10.0 GB a day
DVR Storage	Both on HDD or NAS
DVR Quality	640 X 480 and Up to 6 MB Pixels



## Hardware Requirements

- **Hardware Requirement**

- CPU : Pentium III CPU or faster
- RAM : 1 ~ 4 CH 128 MB, 6 CH Above 256 MB
- HDD : 100 MB free disk space (for monitor). And 20 GB for DVR Recording. Is a minimum.
- VGA Card : 16 Bits high color or above.
- Monitor : Color Monitor.
- Ethernet : 10 / 100 / 1G Base.
- HUB : 100 / 100 Base, switching HUB is prefer.

- **Operation System**

WIN95, WIN98, WINNT, WIN2k, WINME, WINXP, WIN2003 and Vista  
(Suggested platform WIN2k, WINNT, WINXP, WIN2003, Vista)

- **Network Browser IE is needed**

MS Internet Explorer(6.0 Or later version).